

# HERALD



Join us online or in person as we continue our Advent sermon series, "A Weary World Rejoices." We hope you will join us.

VOLUME 13, NUMBER 22

FRIDAY, DECEMBER 2, 2022

571870

## NINE Things Not to Miss During the Christmas Season

**1** **All aboard!! The Train and Hot Cocoa have arrived!**  
It just isn't Christmas at White's Chapel without the trains! Maybe that's

because there is so much to see: Multiple trains feature our own Walton Chapel, Southlake Town Square, a bear nativity, shoppers running to and fro, skiers, kids, animals, Lallier's family gas station, (don't forget to

look for Wesley!), and of course Santa Claus! Bring the whole neighborhood to enjoy our spectacular Christmas train experience.

The regular schedule for the WC Trains is available on the White's Chapel website, or at [wctrains.com](http://wctrains.com). Trains will also be running during all special events: Christmas services, concerts, etc. The hot cocoa (or specialty coffee) is a great addition. Don't forget to tour the Angel Tree Forest throughout the concourse! Daily through Jan. 2 [wctrains.com](http://wctrains.com)

**2** **Bake It or Buy It with John and Todd**  
After three years, it becomes tradition! Join Pastors John

and Todd as they create memories and messes with holiday recipes! New Christmas videos are added weekly on the church website, beginning Dec. 2. Dec. 2-23 [whiteschapelumc.com](http://whiteschapelumc.com)

**3** **White's Chapel Christmas Worship Experience**  
Coming up next weekend, Dec. 10 and 11, is the annual Christmas

Worship Experience. "The Song of Christmas" is a gift of love from our White's Chapel musicians to the entire community. The event has been in production since September and is a collaboration of all of the adult choirs, the WC Orchestra, the Praise Band, Cantare, Youth Ensemble, soloists, dancers and more. Dec. 10 | 5:30 p.m. Dec. 11 | 9 & 11 a.m. Brunch | 8 a.m. - 1 p.m.

**4** **Carols, Cookies and Cocoa**  
It's an old-fashioned hymn sing-Christmas edition! If you love to sing Christmas carols you won't want to miss this nostalgic return to simpler times when families and friends

came together to enjoy sharing Christmas carols. Refreshments and treats will be available. Tuesday, Dec. 13 | 6 p.m. | Sanctuary



**5** **Service of Remembrance**  
The Christmas season can be a difficult time for those who have lost loved ones. This special service sets aside a time to remember those who are no longer with us. Wednesday, Dec. 14 | 6 p.m. Sanctuary

**6** **Follow the Star: A Journey to the Manger A Christmas Nativity Drive-Thru Experience**  
Adults and kids of all ages will delight in the sights and sounds

of the Christmas journey. Join White's Chapel for this drive-thru experience featuring live actors, animals, and all the excitement of that special night in Bethlehem. Narrated by our very own Pastor John McKellar, this drive-thru is sure to evoke joy as participants focus on the true message of Christmas! Dec. 8 & 9 | 6 - 8 p.m.



**7** **"The Star" Family Movie Night**  
Pack up your pillows and blankets, come in your jammies, and bring your family (especially small children!), for this year's

NINE cont'd on page 2

### December Communion Offering to Help Nepal Leprosy Hospital

Can you possibly imagine how you could cope with having no hands... or no fingers?

How would you feed yourself, clothe yourself, wash yourself, pick things up, write, type, scratch an itchy spot, tie shoe-laces, pick up anything... do anything? For many, many people in Janakpur, Nepal — a very poor part of the world — one or both hands are mutilated or deformed, often with limited or no function, due to the ravages of leprosy, burns, crush injuries, congenital malformations, and several other causes. White's Chapel has designated a communion offering annually for about five years to the Lalgadh Hospital in the Dhanusha District of Nepal, and the communion

COMMUNION cont'd on page 4



A dream team consisting of rotating volunteers travels every week to downtown Fort Worth to the Ronald McDonald House. Each week, they package meals and fill the refrigerator for families of critically ill children. This is one of many ministries at White's Chapel that depends on volunteers to be the hands of Jesus to the poor, the weak, and the needy. As the new year begins, please prayerfully consider giving your time to one of our helping hands ministries.

### Wednesday, Dec. 14 | 6 p.m. Service of Remembrance

"The light shines in the darkness, and the darkness has not overcome it." - John 1:5

The holidays can be a challenging time for those who have recently lost family members and friends. Family gatherings and social events on and around Christmas often remind us of the absence of those who are no longer with us. White's Chapel offers a beacon of light and hope to all who seek comfort through worship experiences and celebrations throughout the season. Join us Wednesday, Dec. 14, at 6 p.m., in the Sanctuary, as we gather to celebrate that light and hope of Christmas at the Service of Remembrance. The Service of Remembrance is a unique, annual worship experience



SERVICE cont'd on page 2





Bake It Or Buy It Recipe  
**OYSTER CRACKERS**

As seen with John and Todd at whiteschapelumc.com

**INGREDIENTS**

- 1 cup oil
- 1 teaspoon dill weed
- ½ teaspoon lemon pepper
- ¼ teaspoon garlic powder
- ¼ teaspoon cayenne pepper
- 1 package Ranch style dressing mix
- 10 oz package of oyster crackers

**INSTRUCTIONS**

- In saucepan boil all ingredients except crackers, stirring constantly.
- Bring to a soft boil.
- Pour over crackers and mix well.
- Place on cookie sheet.
- Let cool. Store in an air tight container.

**THE STAR**  
FAMILY MOVIE NIGHT  
FRIDAY, DEC. 16 | FOUNDRY | 6 P.M.  
COME IN YOUR JAMMIES, BRING YOUR BLANKETS AND PILLOWS, AND ENJOY THIS FUN CHRISTMAS MOVIE  
REGISTER ONLINE AT WHITESCHAPELUMC.COM

**Nine Things**

Cont'd from page 1

family movie night! Arrive early to enjoy the Christmas trains in their nighttime wonder. The movie "The Star" starts at 6 p.m. with popcorn, cookies and hot chocolate provided.

Friday, Dec. 16 | 6 p.m. | The Foundry



**Christmas Eve at White's Chapel**

You probably haven't received the post card in the mail yet, so here is another printed list of times to share with family, neighbors, and friends (and also to help with personal planning!) All are candlelight services.

Saturday, Dec. 24 | 11 a.m., 2:30 p.m., 4 p.m., 5:30 p.m. & 11 p.m. | Sanctuary

And yes, for those leaving town early, there is the Christmas Eve eve service.

Friday, Dec. 23 | 7 p.m. | Sanctuary



**Fort Worth Symphony Orchestra Holiday Concert**

Hear your favorite holiday classics brought to life by the full majesty of the Fort Worth Symphony Orchestra. The "Sounds of the Season" concert is a family-friendly, must-see event that will fill you with holiday cheer. The concert will take place in the Sanctuary.  
Adults \$20 | Children \$10 | APEX Members \$15  
Tuesday, Dec. 20 | 7 p.m.



**FINANCIALS NOV.**

November	2022	2021
Week 1	\$276,938	\$283,085
Week 2	\$178,345	\$205,336
Week 3	\$276,576	\$241,193
Week 4	\$268,620	\$229,693
MTD Actual	\$1,000,478	\$959,307
MTD Goal	\$ 956,107	\$725,206
MTD Variance	\$ 44,371	\$ 234,101
YTD Actual	\$8,987,241	\$8,360,428
YTD Goal	\$8,891,771	\$7,908,394
YTD Variance	\$ 95,470	\$ 452,034

**Service**

Cont'd from page 1

organized in partnership between the Care and Support and Stephen Ministries of White's Chapel. The service will also be streamed live (at whiteschapelumc.com) for those unable to attend in person.

The Service of Remembrance memorializes loved ones who have died and celebrates that the light of Christ pierces any darkness we may experience this Christmas season. Scripture, music, an uplifting and healing message, and rituals of remembrance are all part of this reflective and triumphant service.

During the culminating movement of the service, candles arranged in a cross are lit one by one as the names of loved ones are read aloud to acknowledge and celebrate their life.

The incarnation, the in-breaking of God through the birth of the Christ child, is a profound cause for celebration. For in and through the taking on of human flesh, God unites divinity with humanity. God becomes human in Christ so that all human flesh can be clothed with divine life. Through the birth, life, death, and resurrection of Christ, God shares in our fragile and mortal lives to ensure death does not get the final word.

Life becomes victorious for all those who claim Christ as our Lord and Savior. The light of the world, Jesus Christ, pierces the darkness of our world to offer each of us salvation and hope. This is what we commemorate and celebrate

through the Service of Remembrance.

More than 20 years ago, Stephen Ministry leaders and Rev. Betsy Godbold designed a small Service of Remembrance to comfort members who had lost a loved one to death in the previous year. Over time, this service grew as our congregation grew, with more names added, more room added to our cross, and more members attending this annual worship experience. With the support of our Pastors, Stephen Ministers, and the people of White's Chapel, this service has become a



fixture in our worship offerings year in and year out during the Christmas season.

Stephen Ministers are trained laypeople who provide one-to-one Christian caregiving with those facing challenging

life situations in a non-judgmental, supportive, and confidential manner. Stephen Ministers journey one-on-one with those facing various difficult life situations, including divorce, grief, job loss, illness, death, uncertainty, family problems, anxiety, or other challenges.

To submit up to five names to be read aloud at this year's Service of Remembrance, go to whiteschapelumc.com. Names must be submitted no later than noon on Thursday, Dec. 8. Any names received after this date will be read aloud but will not appear in print in the Order of Worship. To schedule childcare for children 3-years-old and under, email dmartinez@whiteschapelumc.com.

Rev. Kyle Roberson  
kroberson@whiteschapelumc.com  
Stephen Ministry  
stephenministry@whiteschapelumc.com

**WEEKEND PREACHING SCHEDULE**

**THE FOUNDRY**  
SAT. 5:30 p.m. | Contemporary w/ Rev. Jon Reeves  
SUN. 11 a.m. | Rebroadcasted 9:30 a.m. Sermon

**SANCTUARY**  
SUN. 8:20 a.m. | Traditional w/ Rev. Jon Reeves  
SUN. 9:30 a.m. | Contemporary w/ Rev. Jon Reeves  
SUN. 11 a.m. | Traditional w/ Rev. Jon Reeves

**WALTON CHAPEL**  
SUN. 9:30 a.m. | Traditional w/ Rev. Sterling Smith

**WHITE'S CHAPEL HERALD**  
Church office - (817) 481-4147

**Editor** Debbie McKellar  
**Managing Editor** Cassidy Williams  
**Graphics and Design** Susanna Cunningham  
**Graphics Consultants** Alec Hanson & Sarah Hamilton

White's Chapel Herald USPS 25541 is published weekly except for the second week of March and the week of Thanksgiving, and then changes to alternate weeks beginning the Friday after Memorial Day, changing back to weekly in mid-August, and skips the week between Christmas and New Year, by White's Chapel United Methodist Church, 185 S. White Chapel Blvd, Southlake TX 76092-7308. Periodicals Postage is paid at Grapevine, TX and additional mailing offices. Subscription rate: \$10 for one year.  
POSTMASTER: Send address changes to White's Chapel UMC, 185 S. White Chapel Blvd, Southlake, TX 76092-7308





**Follow the Star Drive-Thru: Volunteers Needed Dec. 8 & 9 | 6 to 8 p.m.**

Adults and kids of all ages will delight in the sights and sounds of the Christmas journey. Join White's Chapel for this drive-thru experience featuring live actors, animals, and all the excitement of that special night in Bethlehem. Narrated by our very own Pastor John McKellar, this drive-thru is sure to evoke joy as participants focus on the true message of Christmas!

We need families and adults to portray biblical characters for this community drive-thru. Families may sign up as shepherds, citizens of Bethlehem or angels. Adults will portray Mary & Gabriel, Emperor Augustus, Mary & Joseph, and the three Kings. Children under 12 need to have a parent signed up with them. We will have 2 shifts for each night.

This is a great chance to be a part of the magic of Christmas. Register at [wckids.org](http://wckids.org).

Dana Netzer / [dnetzer@whiteschapelumc.com](mailto:dnetzer@whiteschapelumc.com)



**WC Kids Arts Academy Tuesdays, Jan. 10 - March 28**

*Please note class times have changed for the*

*spring semester. Registration opens Dec. 1 at [wckids.org](http://wckids.org).*

The WC Kids Arts Academy gives students the opportunity to express their creativity through a variety of engaging art forms. The goal is to provide a fun, safe environment for kids to explore their gifts and talents, knowing that we are not seeking perfection but growth. We want to be the place where everyone feels welcome. We offer classes in dance, cooking, art, Legos, stop motion animation, and an intro to theater. The cost is \$50 per semester. There may be an additional fee for costumes. Save the date now for the Arts Academy Showcase on Tuesday, April 4.

We are always looking for adults to share their talents or hobbies with our students. Can't commit to a whole semester? Contact us and we can work out a schedule that works for you.

To volunteer or get more information about the classes, please contact: Erin Schechter [eschechter@whiteschapelumc.com](mailto:eschechter@whiteschapelumc.com)



**WC Theater**

WC Theater is a place for students to come as they are, learn about

God's love, and strengthen their gifts and talents. Every semester, students work together to create a full production that showcases them at their very best. Through acting, singing, dancing, tech, and a lot of hard work, the magical world of theater comes to life on stage to tell beautiful and exciting stories. We have two classes: Theater 1 (fourth through sixth grade), and Theater 2 (seventh through 10th grade).

Spring auditions are Jan. 7 for Theater 1 & Jan. 8 for Theater 2. Classes begin on Jan. 12 and will be every Tuesday and Thursday.

Theater 1 students practice from 5 to 6 p.m. Performances of "Madagascar - A Musical Adventure JR." will be on May 4 & 5. Theater 2 students practice from 6 to 8 p.m. Performances of Disney's "The Little Mermaid JR." will be on May 11 & 12. Registrations at [wckids.org](http://wckids.org).

Julie Blalock | [jblalock@whiteschapelumc.com](mailto:jblalock@whiteschapelumc.com)

**WC Kids Arts Academy: Teachers Wanted for Next Semester**

We are specifically looking for more adults to help with cooking, art and class assistance. This is a paid position that

entails working Tuesdays from Jan. 10 to April 4 for two to four hours per week.

If interested, contact: Erin Schechter [eschechter@whiteschapelumc.com](mailto:eschechter@whiteschapelumc.com)

**Children in the Christmas Worship Experience**

Children 5 years old and older may participate as angels or shepherds in our annual Christmas Worship Experience. Choose to participate in one or more of the three services: Saturday, Dec. 10 at 5:30 p.m., and Sunday, Dec. 11 at 9 and/ or 11 a.m.

A mandatory dress rehearsal for all participants will take place at 9 a.m. Saturday, Dec. 10.

Denise Bennett [dbennett@whiteschapelumc.com](mailto:dbennett@whiteschapelumc.com)



**Christmas Story Time Wednesday, Dec. 21 at 10 a.m.**

Join us in the bookstore annex for a special Christmas Story Time!! We will

read Christmas stories, sing Christmas songs, make a craft, and have a snack. A fun, festive morning for children second grade and under. After story time, visit the WC Trains and play at Wesley's Indoor Playground.

Register at [wckids.org](http://wckids.org).

Erin Zajac / [ezajac@whiteschapelumc.com](mailto:ezajac@whiteschapelumc.com)

**WC Kids Christmas Eve Service Saturday, Dec. 24 at 11 a.m.**

Don't miss this service full of Christmas cheer and cuteness! Our youngest kids, 4 and 5 years old, dress up as Mary, Joseph, angels, shepherds, animals, and kings to participate in the pageant. The first through sixth graders share a joyful sound in the WC Kids Christmas Choir and our Rock Stars perform a funny skit with a Christmas message. As with all WC Christmas Eve Services, we will close the service with a candle lit singing of Silent Night.

Denise Bennett [dbennett@whiteschapelumc.com](mailto:dbennett@whiteschapelumc.com)



**Spring Confirmation for Sixth – 12th grade**

Confirmation is the opportunity for students to make their faith their own. When children are young, they are entrusted to their parents and faith community to be brought up in the faith until they can claim it for themselves. Confirmation is the opportunity for each student to do just that. Over the course of 10 weeks, students will have the chance to discover for themselves what the Church is all about.

Confirmation is a time that combines key Christian education, spiritual development, and an invitation into the fuller life of the church, just when students need it most. This experience ends with a service in which the students will be welcomed into full membership at White's Chapel!

Students may choose Sundays or Wednesdays to attend Confirmation. See the options on the registration page at [wckids.org](http://wckids.org).

Anne-Marie Berg [aberg@whiteschapelumc.com](mailto:aberg@whiteschapelumc.com)

Denise Bennett [@whiteschapelumc.com](mailto:@whiteschapelumc.com)

**A Few Christmas Favorites**

**What one thing are you most grateful for this holiday season?**

<p>"There's too many things but the thing I'm most grateful for is my mom and her love through all these years - and how she made the holidays so special."</p> <p>Tracy Christensen Director of Adult Discipleship</p>	<p>"Family... we used to go look at Christmas lights and do a lot of things, but I realize now it wasn't about the things but it was about who you're doing them with."</p> <p>Rev. Kyle Roberson Pastor for Care and Support</p>	<p>"I am most grateful that my extended family still loves to get together, and we don't just wait for the holidays to do it. We still do it probably two or three times a month. That is something that I have prayed for many, many times for my kids and their kids."</p> <p>Clint Blalock Music &amp; Worship Deputy Director</p>
---	---	---

**What's your favorite - or least favorite - Christmas song?**

<p>"My favorite song is Silent Night."</p> <p>Tracy Christensen Director of Adult Discipleship</p>	<p>"White Christmas by The Drifters."</p> <p>Andrew Rybak Video Editor and Audio Engineer</p>	<p>"We Three Kings."</p> <p>Rachel Moraw Social Media Manager</p>
<p>"Grandma Got Run Over by a Reindeer - oh I can't stand that one!"</p> <p>Rev. Sterling Smith Pastor for Missions &amp; Evangelism</p>	<p>"Mary Did You Know."</p> <p>Julie Speelhoeffer Receptionist</p>	<p>"Mary Did You Know."</p> <p>Linda Spence Executive Assistant to the Co-Pastors</p>
<p>"I really like it when Grace sings Hark... I also like Winter Snow. Oooh - my least favorite is probably Christmas Shoes - it's so sad and it makes me cry."</p> <p>Rev. Sam Robbins Teaching Pastor</p>	<p>"My favorite Christmas song used to be Steigh Ride for so many years... now, I think it's The Secret of Christmas by the Vocal Majority."</p> <p>Clint Blalock Music &amp; Worship Deputy Director</p>	

**In addition to a great celebration of the birth of Jesus, Christmas is...**

<p>"A time to remember Jesus, spend precious time with family, and enjoy all the decorations and festivities of the season."</p> <p>Rev. Sterling Smith Pastor for Missions &amp; Evangelism</p>	<p>"It's about God's love... and enjoying family time. It's a time to focus on genuine connection and to remember that we are all unified by God's love."</p> <p>Rev. Victor Resendiz Pastor for Spiritual Formation</p>	<p>"Sweet and spiritual!"</p> <p>Dedra Moffat Outreach Assistant</p>
<p>"For me, it's about the wonder in my grandkids' eyes."</p> <p>Kim Stinson Outreach Administrative Assistant</p>	<p>"It's a time to just be with family and be thankful for everything we have."</p> <p>Tracy Christensen Director of Adult Discipleship</p>	<p>"It's all about family."</p> <p>Rev. Kyle Roberson Pastor for Care and Support</p>
<p>"A great excuse to have a little extra fun; it's a great time to maximize those things and having that extra permission is all that the kid in me needs - it puts me in a mood of looking for ways to maximize fun and memories... the older I get though, the more my heart turns to asking how do I maximize the fun that I want my family to have so that when we get to January, we say 'wow we made some awesome memories together.' So that's where my mind goes now as a dad... it's about faith and intentionality, in our Christian practices, passed down through traditions, it's important to bring our faith into our every day and not just into the services we go to - and how do we take some of that outside of the church and find practices and traditions that we can do to pass our faith to our kids."</p> <p>Clint Blalock Music &amp; Worship Deputy Director</p>		

**The Best Christmas Movie is...**

<p>"Home Alone 2"</p> <p>Andrew Rybak Video Editor and Audio Engineer</p>	<p>"Christmas Vacation."</p> <p>Rev. Sterling Smith Pastor for Missions &amp; Evangelism</p>	<p>"Christmas Vacation."</p> <p>Rev. Victor Resendiz Pastor for Spiritual Formation</p>
<p>"My all-time favorite is Miracle on 34th Street with Natalie Wood... and Love Actually."</p> <p>Tracy Christensen Director of Adult Discipleship</p>	<p>"Oh - Lord of the Rings for sure... it's totally a Christmas movie; it's got golden rings, elves..."</p> <p>Clint Blalock Music &amp; Worship Deputy Director</p>	
<p>"A Christmas Story."</p> <p>Rev. Kyle Roberson Pastor for Care and Support</p>	<p>"It's A Wonderful Life... and the Grinch!"</p> <p>Dedra Moffat Outreach Assistant</p>	<p>"Elf."</p> <p>Kim Stinson Outreach Administrative Assistant</p>

**Family Christmas Bible Trivia**

Ask your family members the following Christmas questions, and see how many they can get right!

<p><b>QUESTIONS</b></p> <ol style="list-style-type: none"> <li>Where can we read about the birth of Jesus?</li> <li>Who gave birth to Jesus?</li> <li>What city was Jesus born in?</li> <li>Who told Mary that she was with child?</li> <li>Who followed a star to find baby Jesus?</li> <li>What is a manger?</li> <li>What gifts did the wise men bring?</li> <li>What are three names of Jesus found in the Bible?</li> <li>What does the name Immanuel mean?</li> <li>Where did Jesus' family flee to from Bethlehem?</li> </ol>	<p><b>ANSWERS</b></p> <ol style="list-style-type: none"> <li>In Matthew and Luke</li> <li>Mary</li> <li>Bethlehem</li> <li>the angel Gabriel</li> <li>the wise men</li> <li>a feeding trough</li> <li>gold, frankincense and myrrh</li> <li>Jesus, Lord, Immanuel, Christ, Prince of Peace, Savior, Redeemer, Teacher, Son of the Living God, King of Kings, Bread of Life</li> <li>"God with us"</li> <li>Egypt</li> </ol>
--	---



# COMMUNITY CONNECTIONS

## Classic Adult Fellowship Christmas Brunch Luncheon

Friday, Dec. 16 | 10:30 a.m. Check In 11 a.m. Start

Celebrate the joy of the Christmas season with Classic Adult Fellowship (CAF), a group of seniors 55 and older, as they enjoy a delicious Christmas spread. Group members and guests are encouraged to wear something festive for this end-of-year event! Please contact group director Laurie Williams at [lwilliams@whiteschapelumc.com](mailto:lwilliams@whiteschapelumc.com) to allow for proper seating and amount of food. Community members are welcome.

## Understanding Your Grief

Thursdays, Jan. 12 - March 30  
3:30 - 5:30 p.m.

### Center for Spiritual Care

Whether it has been recently, or some time has passed, the death of a loved one often leaves us feeling paralyzed and wondering how we can move

forward. We invite you to attend an 11-week study that uses scriptural wisdom to explore the pain and emptiness that accompanies grief. This study approaches the concept of grief with the understanding that each of us grieves differently, and in our own time and pace. The class will be helpful in offering specific coping strategies to guide people back to finding the fullness of life. If you or someone you know is grieving the death of a loved one, we invite you to join us.

Join Rev. Kyle Roberson as participants follow Alan Wolfelt's "Understanding Your Grief" book and Journal; both resources are available for purchase in the Circuit Writer's Books and Such bookstore. Each class is limited to 12 participants; all are welcome. Registration is available on the church website.

Rev. Kyle Roberson  
[kroberson@whiteschapelumc.com](mailto:kroberson@whiteschapelumc.com)

TURN IN ORDER FORMS FOR

# POINSETTIAS

BY DEC. 4

Forms go to the front desk in the admin building

# Merry Christmas!

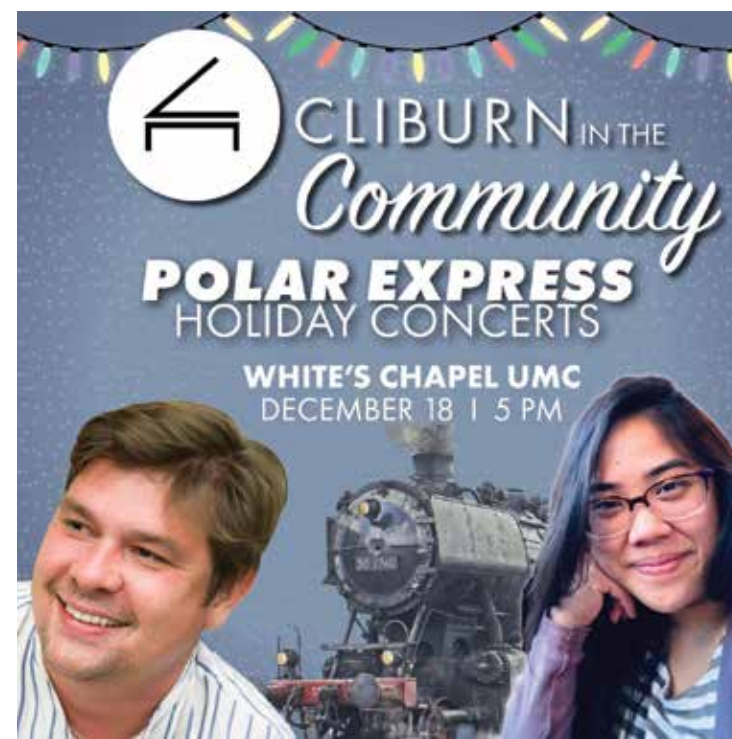
No Wednesday Night Dinner due to Christmas Break (Returning Jan. 11)



## Prayer List

Kathy Abelanet, Wole Akinyeju, Libby Assenheimer, Luke Baca, Jack Bair, Doug Bales, Carol Barret, Walt Barret, Jerry Barron, Cash Beatty, Donald Becker, Alexander Bhatnagar, Tena Bibb, Joyce Billingsley, Mindy Bogan, Robin Boomstra, Sam Braun, Pam Brown, Mary Ann Browning, Gay Bryan, Ron and Carol Bryant, Carol Burns, Joe Burns, Bobbie Cameron, Anne Marie and August Carver, Dorothy Casetta, Jim Chambers, Otis Chaplin, Lee Chenault, Jaya Chetri, Jesse Cobb, Lola Cobb, Sophia and Amelia Coleman, Mel Crosier, Leah Davidson, Andy Dillon, Jean Doricko, Stacey Dyer, Wilma Dykman, Maxine Fry, Marty Geer, Shelly Gillette, Jane Grazer, Tim Green, Tess Gregory, Heritage Grimplin, Ron Hadley, Mark Hall, The Randall Hall Family, Judith Hallam, Al Hansen, Marty Harris, Maxie Hays, Ron Healey, Art Hill, Lorrie Hill, Kay Hines, Jackson Howell, Pat Hukill, William "Charlie" Jacobsen, Paulo Jacuzzi, Terri Janes, Doug Jenkins, Russ Jones, Audry Kovach, Connie Lamb, Caleb Graham Larson, Serenity Lee, Sunhi Lee, David Liechty, Arden Mack, Kay Madera, Bill Marquez, Madison and Tim Mason, Ann Miller, Drake Miller, Mary Miller, Bruce Moilan, Tom Morris, Nelda Morrow-Winblood, Jeff Nadeau, Larry Nichols, Jim Niewald, Reagan Noble, Clark Norman, Valor Nunez, McCurtain County, OK, Ron Oliver, Jamie Ong, Paul Padilla, Kathy Pierce, Brandon Potier, Fadia Pyatt, Kim Rhodes, Elizabeth Rowland, Kevin Schaffer, Carter Schultz, Beth Scoggins, Pat Skinner, Steve Swanston, Jeanie Swink, Deanna Talbott, Laura Thomas, Carolyn Thompson, Jenny Thornell, Gladys Vance, Rolando Villaruel, Camille and Gazelle, John Walling, Dianne Williams, Dick Williams, Ken Williams, Vicki Winn, Mary Grimplin Zoltek. Recent deaths: The Family of Luisa Pañgan Alcances, The Family of Terry Barker, The Family of Jane Bearden, The Family of John Bolton, The Family of Marcy Buckley, Jean Burke and Family, The Family of Nancy Hampton, The Family of Sheila Hanson, The Family of H. Wayne Harris, The Family of Don Hellstern, The Family of Chris Hill, The Family of Dianne Hutchinson, The Family of Phil Larson, The Family of Bill Lee, The Family of Mitchell Morton, The Morton Family, The Family of Judy Powell, The Family of Mike Riley, The Family of Gary Simms, The Family of Jim Steele, The Family of Diane Wright.

You may submit prayer requests at [whiteschapelumc.com/prayer-request.html](http://whiteschapelumc.com/prayer-request.html)



## APEX Arts League and White's Chapel are Pleased to Welcome "Cliburn in the Community"

Sunday, Dec. 18  
5 p.m. | Grace Chapel

All aboard the Polar Express! Piano duo Sara Doan and Mikhail Berestnev take you on a magical musical journey to the North Pole to visit Santa's home, where you can re-discover the wonder and spirit of the holidays. This is their take on Chris Van Allsburg's beloved holiday classic, "The Polar Express."

*This event is FREE and especially suitable for young ears. APEX brings excellence in the arts to Northeast Tarrant County. Music, dance, theater, art, film. Close to home. Something for everyone.*

## Communion

Cont'd from page 1

offering for December has been set aside for this very important and heart-breaking cause.

Although the Lalgadh Hospital is known as a leprosy hospital, other illnesses are diagnosed and treated there as well. In 2013, more than 62,000 people were treated in this rural hospital for various diseases including malaria, malnutrition, meningitis, typhoid, tuberculosis, cholera, respiratory diseases, and parasitic diseases.

As one of the world's busiest leprosy hospitals, with an annual patient-flow of over 1,200 new leprosy patients, 12,800 total leprosy consultations (new and returning), over 87,000 outpatient visits of all types, and a Community Outreach program with 101 Self-Help Groups, the hospital's goal is to provide compassionate high quality, preventive, curative and rehabilitative health care, while also reaching out through active community outreach, social support and training programs. An intense eight - 10 day hand-

reconstructive surgery "BASH" is held at Lalgadh Hospital every year thanks to visiting specialist reconstructive hand-surgeon, Dr. Donald Sammut & his team from UK. Although on-site doctors at Lalgadh Leprosy Hospital do hand-reconstructive operations throughout

the year (especially for leprosy patients), they cannot do many of the more complicated deformities. So, this annual intense hand-surgery event by Sammut and his team attracts people with deformed and mutilated hands from far and wide.

Children, teenagers, adults, and elderly come, often from many days travel away – from distant districts of Nepal, from high mountains

and the Terai, and some from across the border in India. Many come in hope as this is perhaps their one-chance in a lifetime to get their hands restored or reconstructed for improved shape and function.

Sometimes, it is difficult to understand just how important those few dollars contributed to the communion basket are, and how far reaching they are – but these patients understand that importance in a tremendous and grateful way.

**Children, teenagers, adults, and elderly come, often from many days travel away – from distant districts of Nepal, from high mountains and the Terai, and some from across the border in India.**

NOV. 20 - JAN. 1

# WC RAILROAD

WCTRAINS.COM

## WAYS TO GIVE

WHITE'S CHAPEL UMC



TEXT  
TEXT "WCUMC" TO 73256



ONLINE  
GIVE ONLINE AT  
WHITESCHAPELUMC.COM



CASH  
CHECKS PAYABLE TO  
"WHITE'S CHAPEL UMC"



APP  
CLICK "GIVE" AT THE BOTTOM RIGHT

WHITE'S CHAPEL UMC | 185 S. WHITE CHAPEL BLVD. | SOUTHLAKE TX, 76092